

# Rental Power 60 kW



## > Specification sheet

Our energy working for you.™



### Description

This Cummins Power Generation rental package is a fully integrated mobile power generation system, providing optimum performance, reliability and versatility for standby and prime power applications.



This generator set is designed in facilities certified to ISO9001 and manufactured in facilities certified to ISO9001 or ISO9002.



All low voltage models are CSA certified to product class 4215-01.



The Cascade controller is Listed to UL508 - Category NITW7 for U.S. and Canadian usage. Circuit breaker assemblies are UL489 Listed for 100% continuous operation.

### U.S. EPA

Certified to U.S. EPA Mobile Off-Highway Standards.

### Features

#### Cummins diesel engines

- Rugged 4-cycle industrial diesel engine with excellent transient performance.
- Certified to U.S. EPA Mobile Off Highway Standards.
- Lightweight, compact, and excellent fuel economy.

#### Engine controls

- The most advanced, reliable, and capable generator set control system available in the market today.
- Integrated generator set governing, voltage regulation, and protection in one easy-to-operate customer interface.

#### Stamford® alternators

- Designed and built by Cummins Power Generation.
- Oversized alternator for improved motor starting and low temperature rise in prime and continuous applications.
- Permanent magnet excitation for improved performance in cyclic and non-linear load applications.
- 12-lead reconnectable alternator fitted with voltage selection switch.

Model	kW rating		Cummins engine model	Sound level dBa @7m	Generator specification sheet #	Hours of operation (75% load)	
	Standby	Prime				Standby	Prime
DGCB	60	55	4BT3.9-G4	67	S-1117 (50 Hz) S-1118 (60 Hz)	26	28

## Electrical features

- Multiple voltage selector switch (480/277 VAC/3 phase/Wye or 208/120 VAC/3 phase/Wye or 240/120 VAC/3 phase delta).
- Internal 120 VAC shore power distribution panel for powering:
  - Jacket water heater.
  - Battery charger.
  - GFI protected convenience receptacles.
- Battery disconnect switch.
- Safety switch on load connection cover.
- Low fuel level and retention tank fluid detection alarms.

## Base frame/fuel tank

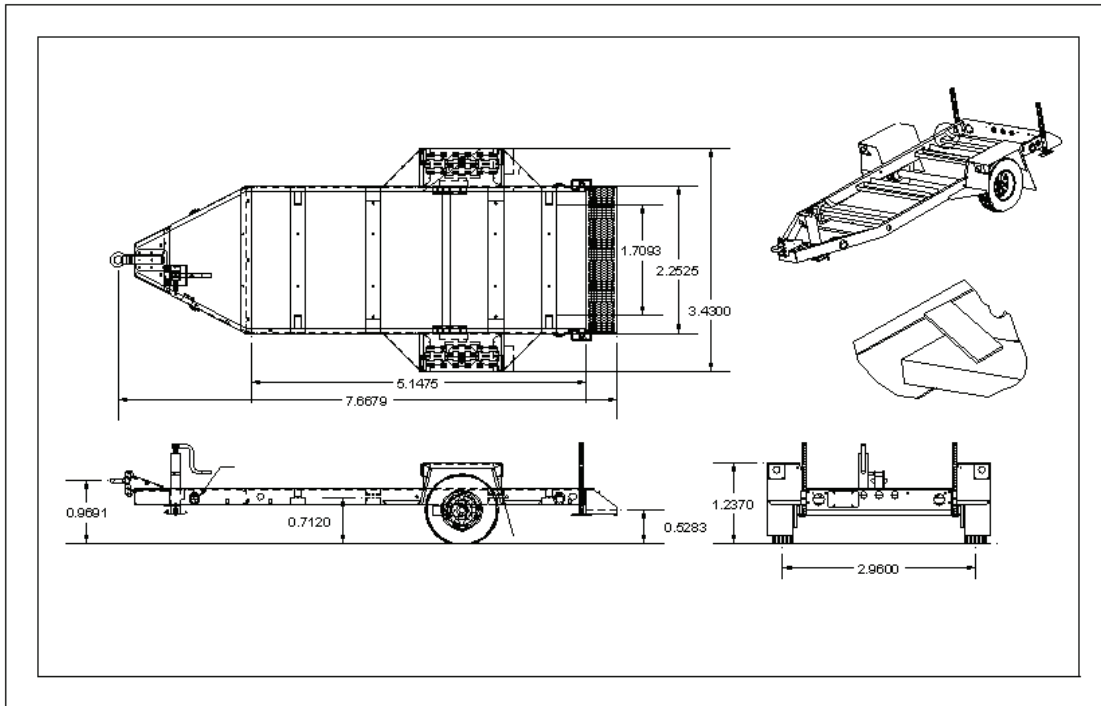
Structural steel oil-field style sub-base fuel tank including:

- Fork lift pockets.
- 4-point lift compatible.
- Mechanical direct reading fuel gauge visible from internal tank fill port.
- 4" x 2" square ID mounting fixtures (for distribution equipment and convenience panels).
- Grip-strut steps at both ends.
- 4" pass-through tubes at both ends.

- Complete fluid containment reservoir for engine fluids.
- NFPA 30 compliant fuel tank design.
- Designed with external fuel fill capability
- UL 142 Listed dual wall fuel tank with:
  - Vented retention tank.
  - Retention tank fluid detection alarm.
  - Low fuel level alarm.
  - Vertically extended normal vents to ensure complete filling without spillage.
  - Fittings for AFTS (Automatic Fuel Transfer System).

## Trailers (purchased separately)

- Single tandem torq-flex axle
- Electric brakes with safety break-away
- Drop deck for stability
- Oversize front jack stand
- 2 x 2" square ID stabilizers at the rear
- Removable rear cross member with grip-strut step for easy genset loading
- Clamp-style genset hold-downs
- Robust step fenders
- Equipped for ball or pintle hitch



**Our energy working for you.™**

[www.cumminspower.com](http://www.cumminspower.com)

©2007 | Cummins Power Generation | Specifications Subject to Change Without Notice  
Cummins and PowerCommand are registered trademarks of Cummins Inc. AmpSentry is a trademark of Cummins Inc.  
S-1283d (3/07)



# Control System



Optional Features Shown

## PowerCommand control with AmpSentry™ protection

- Integrated automatic voltage regulator and engine speed governor
- AmpSentry protection guards the electrical integrity of the alternator and power system from the effects of overcurrent, over/under voltage, under frequency and overload conditions
- Control components designed to withstand the vibration levels typical in generator sets

## Standard control description

- |   |  |
|---|--|
| <ul style="list-style-type: none"> <li>• Analog % of current meter (amps)</li> <li>• Analog AC frequency meter</li> <li>• Analog AC voltage meter</li> <li>• Analog % of load meter (kW)</li> <li>• Cycle cranking control</li> <li>• Digital display panel</li> <li>• Emergency stop switch</li> <li>• Idle mode control</li> <li>• Menu switch</li> </ul> | <ul style="list-style-type: none"> <li>• Panel backlighting</li> <li>• Remote starting, 12 volt, 2 wire</li> <li>• Reset switch</li> <li>• Run-off-auto switch</li> <li>• Sealed front panel, gasketed door</li> <li>• Self diagnostics</li> <li>• Separate customer interconnection box</li> <li>• Voltmeter/Ammeter phase selector switch</li> </ul> |
|---|--|

## Standard protection functions

### Warnings

- High coolant temperature
- High DC voltage
- Low coolant temperature
- Low DC voltage
- Low oil pressure
- Over current
- Oil pressure sender fault
- Overload load shed contacts
- Temperature sender fault
- Up to four customer fault inputs
- Weak battery

### Shutdowns

- Emergency stop
- Fail to crank
- High AC voltage
- High coolant temperature
- Low coolant level (option for alarm only)
- Low AC voltage
- Low oil pressure
- Magnetic pickup failure
- Overcrank
- Overcurrent
- Overspeed
- Short circuit
- Underfrequency

## Standard performance data

### AC alternator data

- Current by phase
- Kilowatts
- Kilowatt hours
- Power factor
- Voltage line to line
- Voltage line to neutral

### Engine data

- Battery voltage
- Coolant temperature
- Engine running hours
- Engine starts counter
- Oil pressure
- Oil temperature
- RPM

Our energy working for you.™

[www.cumminspower.com](http://www.cumminspower.com)

©2007 | Cummins Power Generation | Specifications Subject to Change Without Notice  
 Cummins and PowerCommand are registered trademarks of Cummins Inc. AmpSentry is a trademark of Cummins Inc.  
 S-1283d (3/07)



## Ratings definitions

### Standby:

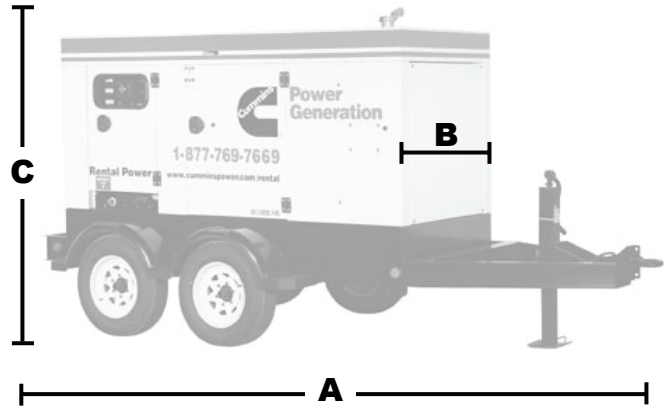
Applicable for supplying emergency power for the duration of normal power interruption. No sustained overload capability is available for this rating. Nominally rated. (Equivalent to Fuel Stop Power in accordance with ISO3046, AS2789, DIN6271, and BS5514.)

### Prime (unlimited running time):

Applicable for supplying power in lieu of commercially purchased power. Prime power is the maximum power available at a variable load for an unlimited number of hours. A 10% overload capability is available for limited time. Nominally rated. (Equivalent to Prime Power in accordance with ISO8528 and Overload Power in accordance with ISO3046, AS2789, DIN6271, and BS5514.)

### Base load (continuous)

Applicable for supplying power continuously to a load for this rating. Nominally rated. Consult authorized distributor for rating. (Equivalent to Continuous Power in accordance with ISO8528, ISO3046, AS2789, DIN6271, and BS5514.)



## Dimensions

Model	Dim "A" mm (in.)	Dim "B" mm (in.)	Dim "C" mm (in.)	Weight w/o fuel kg (lbs)	Weight with fuel kg (lbs)	Fuel capacity liters (gal)
DGCB	3188 (126)	1067 (42)	2464 (97)	2254 (4970)	2570 (5666)	371 (98)

### Cummins Power Generation

1400 73<sup>rd</sup> Avenue N.E.  
Minneapolis, MN 55432 USA  
Telephone: (763) 574-5000  
USA Toll-free: (877) 769-7669  
Fax: (763) 574-5298

**Our energy working for you.™**

[www.cumminspower.com](http://www.cumminspower.com)

©2007 | Cummins Power Generation | Specifications Subject to Change Without Notice  
Cummins and PowerCommand are registered trademarks of Cummins Inc. AmpSentry is a trademark of Cummins Inc.  
S-1283d (3/07)

