

# Instruction Sheet

G755 (Issue 6)

12-2013

## Creating a New Account to Access the InCal Database

Calibration files for download are available from this website for Cummins customers & end users. This website is accessible only by using one of the following internet browsers.

- Internet Explorer
- Mozilla Firefox
- Google Chrome

InCal calibration files are available at:

<http://power.cummins.com/>

In the middle of the screen is the statement “Select Region and Language” (see Figure 1).

Select **North America | English**, and click **go>>**. The Cummins Power Generation (CPG) website for

North America is displayed. Be sure to add this web site to your list of favorites. From the **Home** page, click on the **Product & Services** tab & select **Services** (see Figure 2).

Product calibration information is available on **Software Updates** screen. Click software updates button to navigate to the screen (see Figure 3).

Before you can download calibration files, you must first create a new account. This process includes contacting a system administrator to approve your request. Once your request is approved, you will be notified when you are authorized to search for and download files.

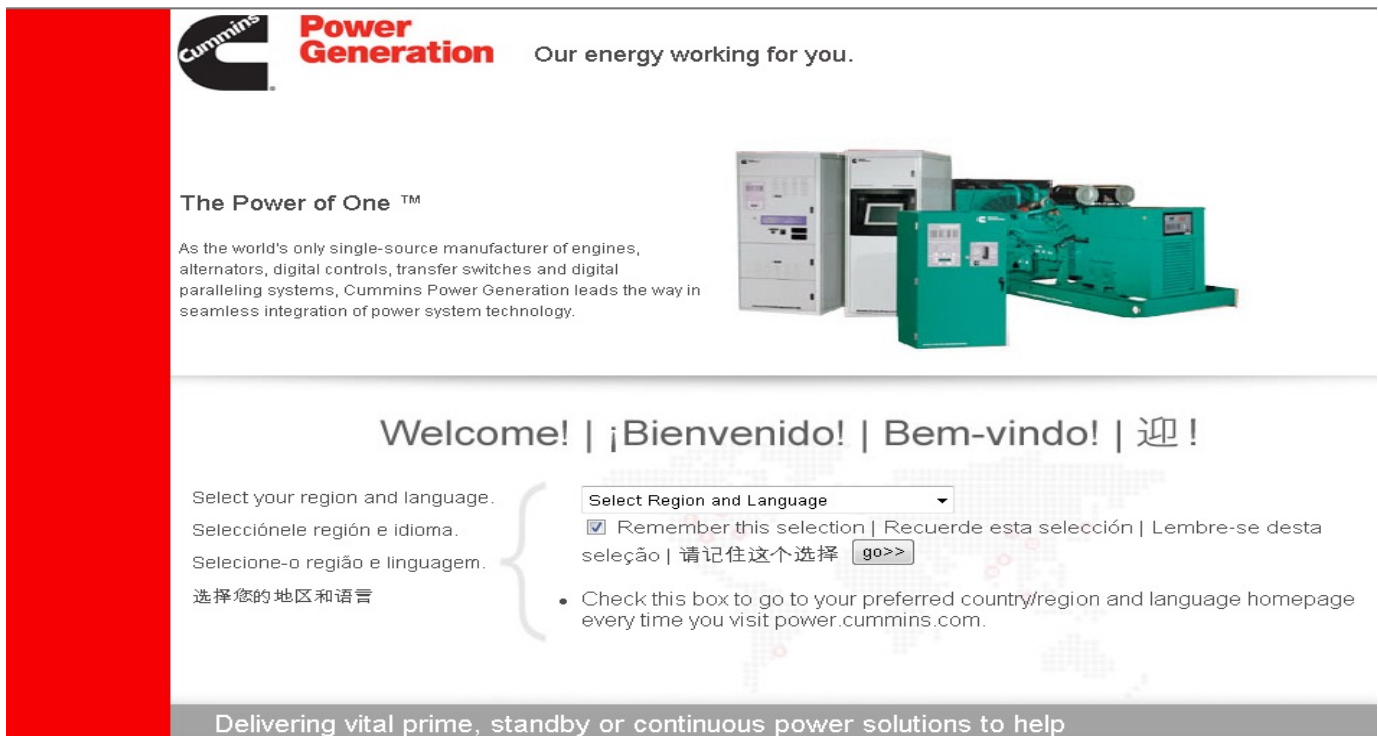


FIGURE 1. THE CUMMINS POWER GENERATION WEBSITE

- Generator Sets
- Services
- Accessories
- Transfer Switches
- Integrated Power Systems
- Paralleling Systems
- Remote Monitoring

# Minimizing Waste and Environmental Impact



1 2 3 4

[Learn About Lean-Burn Gas Generators](#)

**FIGURE 2. THE CUMMINS POWER GENERATION INCAL WEBSITE**

Home > [Products and Services](#) > [Services](#)  
Power Generation Services



**FIGURE 3. THE CUMMINS POWER GENERATION INCAL WEBSITE**

## CREATING A NEW ACCOUNT

The WebInCal software distribution website is intended for InPower users at a global level who support Cummins products and services. It also gives users facility to download the calibration files for few other product lines like Cirrus. Users of the website may include Cummins employees or Guests (non-Cummins employees). Portions of the registration procedure vary, depending upon whether or not you are a Cummins employee or a Guest.

Creating a new account includes registration and

### Find the Update You Need

Whether you're using the Power Suite to select the right power generation products and identify facility design and installation requirements - or you're an InPower customer using InCal software, visit this site for updates and information.

#### Power Suite

We are pleased to announce that the new version, Power Suite 5.0, is here, available at [powersuite.cummins.com](http://powersuite.cummins.com). After completing a short registration form, you will have free instant access to the significantly enhanced tool.

Several new enhancements have been made to Power Suite including a Transfer Products Selector Tool, online GenSize project sharing, and automatic product updates (No Download Required).

Register today for instant access and begin to migrate your Power Suite 4.1 projects to version 5.0. Simply go to the GenSize tab and click on the Import GenSize Project button. Browse to find your existing projects on your local drive and click Import.

Power Suite 4.1 is no longer supported as of October 1st 2012, so start using Power Suite 5.0 today!

If you have any questions or comments, contact us at <https://powersuite.cummins.com/PSWEB/contactUsLogin.action> or 1-888-727-4399.

#### PowerCommand® iWatch100™ and network support files

For Cummins DFSE, Technicians, Networks/Systems Groups and Internal Engineers using LonMaker™ for Windows. [This page](#) contains the latest files for supporting PowerCommand Networks.

#### InCal

The InCal Software distribution website is intended for InPower users at a global level who support Cummins products and services.

If you are a new user, please [click here](#) to begin the registration process. If you're a registered InCal, [click here](#) to log in.

setting up a password.

**If you experience registration problems, send an Email with the error message to *InCal.Website.Support*. (Error Message: "Information (first name, last name or Email) for this user is not valid. Please check & provide correct details to register. If you believe this message to be incorrect, please Email "In-Cal.Website.Support" to resolve this issue.")**

1. When you click on the button (see Figure 3) you can see the new Registration section is at the bottom of the screen (see Figure 4). Click the link to open the registration form (see Figure 5).

FIGURE 4. THE INCAL START PAGE

Please provide the informations requested below:

First Name:

Last Name

E Mail Address

Company Name:

Mailing Address 1:

Mailing Address 2(Optional):

Country:

User Id:

(min . 5 characters)

Dongle Serial No.(optional):

**FIGURE 5. NEW REGISTRATION DIALOG**

2. Fill in the appropriate information. To avoid having your request delayed or rejected, be sure to complete the registration information accurately, as outlined below.

**Cummins Employees:**

- Enter you WWID (World Wide Identification) into the UserID.
- Enter your Cummins Email address in the <First.LastName@cummins.com> format.
- DO NOT use your WWID@cummins.com format.
- Entering the appropriate information will prompt our system to register your WWID. Once your request is approved, you will be granted access to the InCal website using your standard Cummins password (WWIMS – World Wide Identify Management).
- Optional – Enter your dongle serial number.

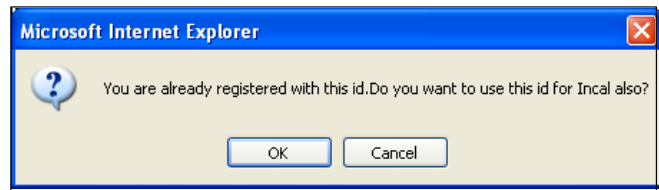
**Guests (All Other Users):**

- Enter any “UserID” you prefer, using at least six characters.
- Enter an Email address that does not contain @cummins.com.
- After approval has been granted, you will be sent an Email link in order to register

your password and establish password recovery information.

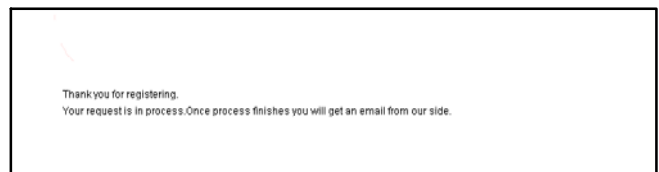
3. Click on the **Register** button.

- a. If you had previously signed up for CPG services, you may be prompted that your ID already exists in the environment (see Figure 6). If so, click on **OK** to continue.



**FIGURE 6. PRE-EXISTING ID NOTICE FOR CPG USERS**

- b. The message “Thank you for registering” is displayed (see Figure 7). Registration is complete.

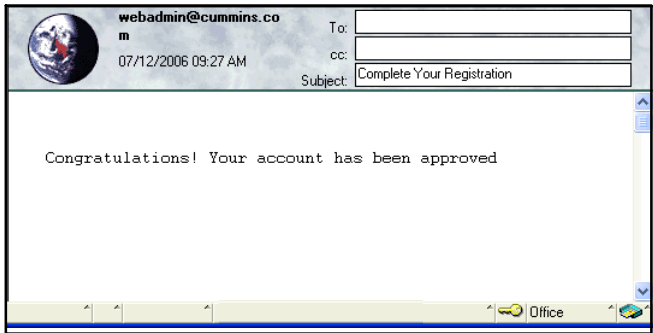


**FIGURE 7. THANK YOU FOR REGISTERING MESSAGE**

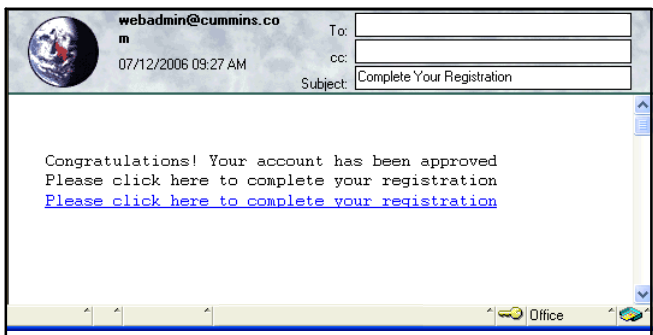
4. Exit the web site.

5. Once your request has been processed, you will receive an Email from webadmin.com (for

CPG users, see Figure 8; for Guest users, see Figure 9). Guest users should click on the link provided in the Email.



**FIGURE 8. NOTICE OF COMPLETION OF REGISTRATION FOR CPG USERS**



**FIGURE 9. NOTICE OF COMPLETION OF REGISTRATION FOR GUEST USERS**

Please submit this form to complete your registration for access to the InCal service files on the web.

User id:

Choose Password:

(8-16 characters, letters & numbers only, case sensitive)

Confirm Password:

In the event that you forget your password, you can automatically request to have a new one emailed to you by answering a pre specified Challenge question please enter the challenge question and answer that you would like to use. Note : To help you remember your answer, Please limit it to one word only.

Challenge Question:

(min. 5 characters)

Challenge Answer:

(ONE word Only, min. 5 characters)

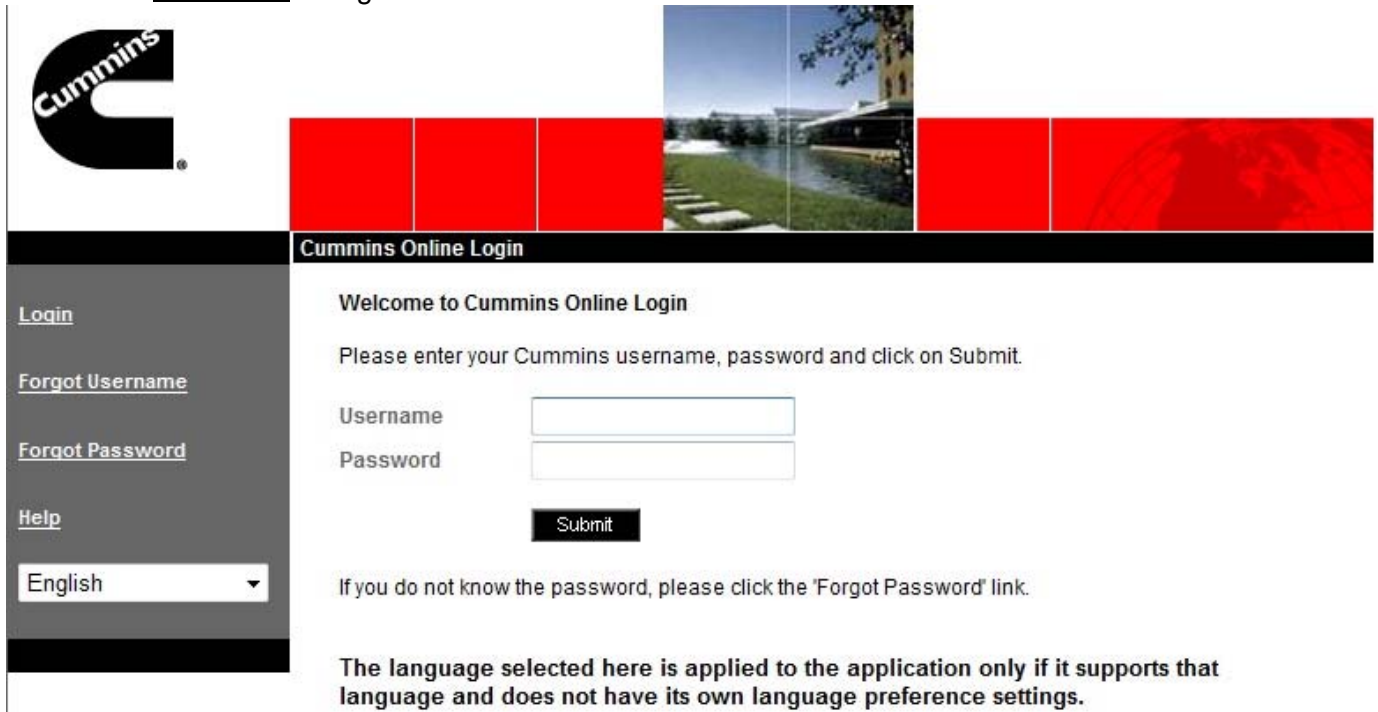
**FIGURE 10. PASSWORD DIALOG**

1. The New Registration password dialog is displayed (see Figure 10). Fill in the appropriate information (Password, Challenge Question, and Challenge Answer) and click on the **Register** button. The message “Your Registration process is already completed” is displayed.
2. To download calibration files, return to the CPG WebInCal home page and follow the instructions below.

## ACCESSING THE INCAL DATABASE

After you have received your user name and password, you can search for and download calibration files from the Cummins Power Generation website.

1. From the CPG home page (see Figure 4), click on the [Click Here](#) to login link. The Cummins



**Cummins Online Login**

Welcome to Cummins Online Login

Please enter your Cummins username, password and click on Submit.

Username

Password

If you do not know the password, please click the 'Forgot Password' link.

The language selected here is applied to the application only if it supports that language and does not have its own language preference settings.

Online Login dialog is displayed (see Figure 11).

2. Enter the Username and Password established when you created a new account. When you click on the **Submit** button, a security alert message is displayed (see Figure 12).
3. Click on **Yes** to access the WebInCal database.

FIGURE 11. ACCESSING THE CUMMINS POWER GENERATION WEBSITE FOR DOWNLOADING INCAL FILES

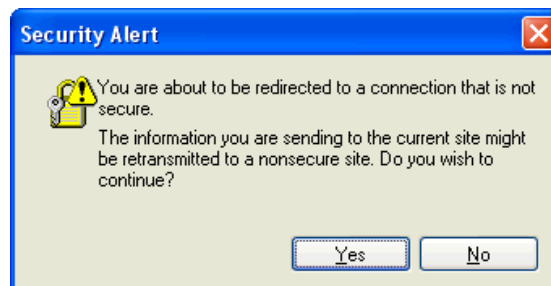


FIGURE 12. LOGIN SECURITY ALERT MESSAGE

## DOWNLOADING CALIBRATION FILES

After entering the correct user name and password, you can then click on the type of file(s) you wish to download. After you click on **Yes** on the security

alert message (see Figure 12), the Search and Download dialog is displayed (see Figure 13).

Select the required product to Download the calibrations to your local machine drive & click download. (See Figure 14).

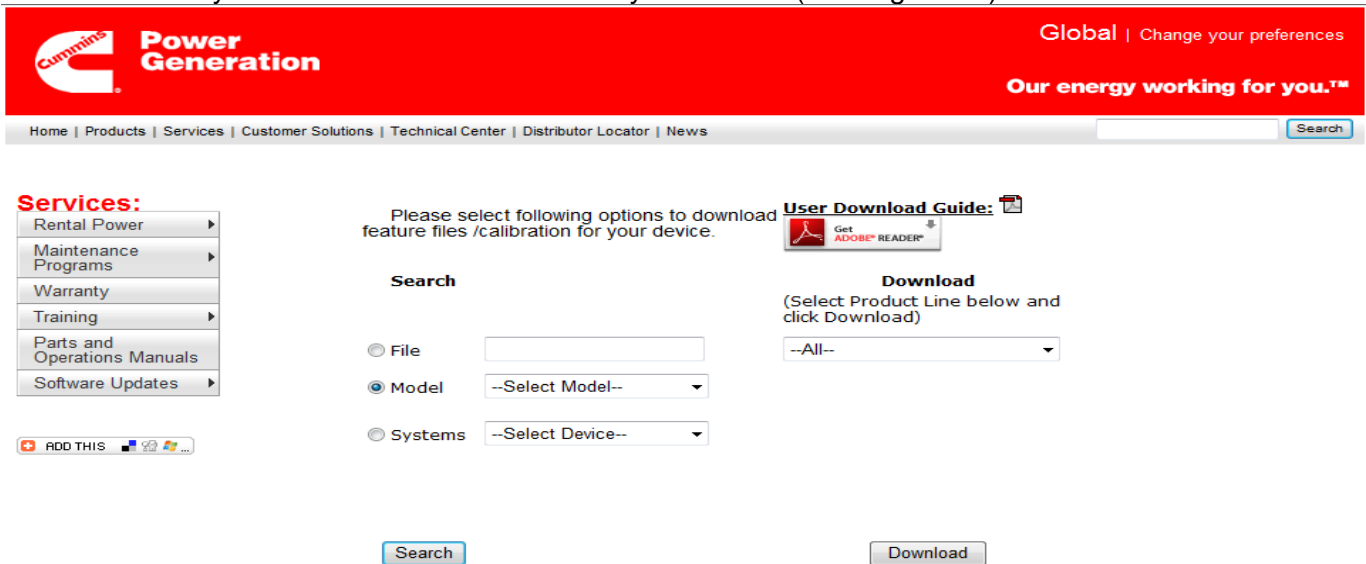


FIGURE 13. SEARCH AND DOWNLOAD DIALOG



FIGURE 14. SELECT THE PRODUCT